

Airo International Research Journal



Volume XIV, ISSN: 2320-3714

February, 2018

Impact Factor 0.75 to 3.19

UGC Approval Number 63012

A Multidisciplinary Indexed International Research Journal



**ISSN : 2320-3714**

**Volume : XIV**

**Journal : 63012**

**Impact Factor : 0.75 to 3.19**



ADHYAYAN  
INTERNATIONAL  
RESEARCH  
ORGANISATION

## **ADDITIVE MANUFACTURING IMPLEMENTATION AND DESIGN ON ORTHOPEDIC IMPLANTS FROM**

**Dr. Padman Kumar Patel**

M.S. (Ortho), Orthopaedic Specialist, CM@HO office, Raigarh, Chhattisgarh

[patel.drpadman@gmail.com](mailto:patel.drpadman@gmail.com)

**Dr. H.S. Varma**

Prof. Orthopaedic

NSCB Medical College Jabalpur

**Declaration of Author:** I hereby declare that the content of this research paper has been truly made by me including the title of the research paper/research article, and no serial sequence of any sentence has been copied through internet or any other source except references or some unavoidable essential or technical terms. In case of finding any patent or copy right content of any source or other author in my paper/article, I shall always be responsible for further clarification or any legal issues. For sole right content of different author or different source, which was unintentionally or intentionally used in this research paper shall immediately be removed from this journal and I shall be accountable for any further legal issues, and there will be no responsibility of Journal in any matter. If anyone has some issue related to the content of this research papers copied or plagiarism content he/she may contact on my above mentioned email ID.

### **ABSTRACT**

*AM has advanced from just being relevant to the fast manufacturing of plastic models, starting in the late 80s, to a strategy for the immediate manufacture of final results in various materials including biocompatible metals. The distinctive AM strategies are persistently creating (with respect to surface complete, resistances, and so on.) as are the important encompassing advances. What appears to be unthinkable, excessively costly or too tedious today could, as it were, be conceivable tomorrow. A case in the dental field is the presentation of cone-pillar CT (computed tomography). This new path for the in-office production of volumetric pictures of life structures has diminished the cost for the patient from around \$1000 for a standard CT to around \$200 and in this way has opened up for more noteworthy utilization of cutting edge treatment arranging identified with AM.*

### **INTRODUCTION**

Additive manufacturing (AM), including both rapid prototyping (RP) and direct creation is an on a very basic level better approach for part fabrication for which parts are prepared straightforwardly from 3D PC models by progressively including layers of materials. These quickly rising advances, together with the improvement of software utilized for 3D reproduction of bone and

delicate tissue organs and for the plan and investigation of custom surgical inserts, have given new open doors in the region of outline and manufacturing of patient-specific (PS) embeds throughout the most recent 20 years.

### **BACKGROUND OF THE WORK**

- 1. Some orthopedic implants and treatment methods**

Orthopedics as a forte was established by Nicolas Andry, teacher of pharmaceutical, who additionally distributed the primary book on fundamental orthopedics in 1741. Around then orthopedics was tied in with remedying distortions in youngsters' life structures utilizing wraps and prostheses. What we now call orthopedic surgery is a wide field including the treatment of fractures, joint wounds, and intrinsic scatters and so on. Because of the expanding normal life expectancy, facilitate development of the utilization of orthopedic surgery can be normal.

- Hip stem inserts
- Osteosynthesis plates and screws
- The clavicle bone
- Treatment of clavicle fractures

## 2. Meaning of Additive Manufacturing (AM),



**Fig.1 Examples of parts manufactured with AM.**

The most widely recognized utilization of AM innovation in 2012 was for coordinate part generation and useful models. Concerning use, in 2012 the

Three-dimensional printing and fast prototyping all alludes to a gathering of advances in which segments are created specifically from PC models, developed in an additive approach by curing, storing or solidifying dainty layers of material to develop the part [1]. Each layer is developed from the cross-sectional geometry of a 3D PC model of the 28 segment. The freestyle idea of AM expels huge numbers of the conventional requirements that controlled part outline in traditional manufacturing like plastic infusion shaping or machining. By building parts layer-wise, exceptionally complex geometries can be manufactured, for instance built cross section structures, interior channels and profoundly natural structures, and with some AM procedures it is even conceivable to create finish congregations incorporating moving parts in a solitary form task,

restorative/dental applications was the third biggest area after buyer items/hardware and engine vehicles. AM is appropriate for therapeutic applications since those

frequently have low generation rates and high intricacy in the geometry because of natural shapes. Likewise the grid structures are intriguing for medicinal applications as frameworks for orthopedic tissue repair and for the plan of inserts with a solidness nearer deep down properties. Access to medicinal imaging innovation utilized as reason for the readiness of restorative models and outline of inserts, the utilization of virtual surgical arranging devices and the direct metal AM manufacture for surgical embeds and instruments are on the whole expanding

## SIMULATION METHODS

1 Limited component investigation The finite element method (FEM) was initially created to take care of complex issues in auxiliary mechanics, yet is today utilized for some, unique issues like warmth exchange, liquid stream, electric fields, and so on. The possibility of the technique is to subdivide a structure into little parts (components), each with straightforward geometry and henceforth significantly less demanding to dissect than the first structure. The

components are associated with each other in focuses called hubs. That route, in a progression of numerous basic counts, arrangements can be found for vast complex structures pretty much approximated, contingent upon the review of rearrangements in the FE-model.

2 Multibody musculoskeletal simulation A musculoskeletal model is a model of the musculoskeletal framework, more often than not characterizing the bones as inflexible bodies obliged by joints with muscles going about as power and development generators, that are utilized to break down athletic execution, evaluate musculoskeletal burdens, digestion, neuromuscular coordination and so on. The product utilized as a part of this theory is the Anyone modeling framework (Anyone Innovation) which is likewise the one portrayed in this section. Other musculoskeletal modeling frameworks, like Anyone are SIMM/FIT (Musculographics Inc) and BRG.LifeModeler (Biomechanics Exploration Gathering, Inc).



**Fig.2. Multibody musculoskeletal manikins from the AnyBody software.**

To reenact the muscle and tendon powers following up on a specific bone utilizing the Anyone modeling framework, a 3D model of the bone is imported into the framework, situated and scaled to fit the model and subjected to multi-body musculoskeletal examination in the coveted body position (or development). One yield record organize 34 accessible from the Anyone modeling framework (containing the subsequent muscle powers and joint reactions) is the Extensible Markup Dialect (XML) arrange, which was the one utilized as a part of this proposal. More insights about the blend of the musculoskeletal powers

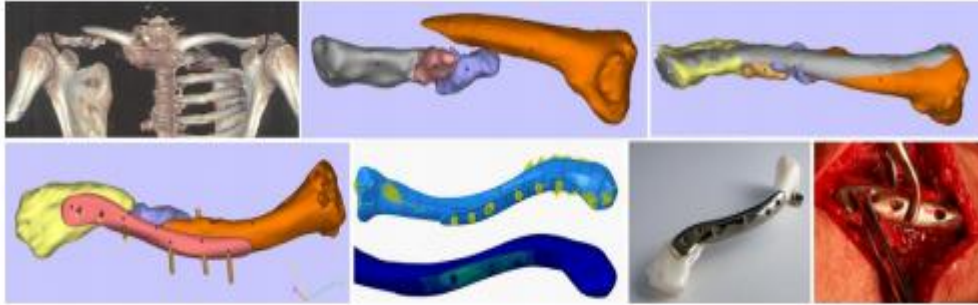
## METHODS

Because of the expansive starting examination point and the need to pick up a comprehension of a few new regions and advancements, the two introductory investigations were based on down to earth cases, including the execution of the diverse parts of the creation chain, from CT-output to definite embed, with the principal concentrating on the EBM manufacturing and the second in general production chain.

The two techniques were contrasted agreeing with the cost of: the material, time for setting up the manufacturing documents and manufacturing. An entire time and cost breakdown was accessible for the EBM manufactured embeds because of the secrecy strategy of the CC.

The underlying writing study and the outcomes from the two beginning examinations shaped the premise of the system plot for use in the proceeding with investigations of PS clavicle osteosynthesis plates. This incorporates the accompanying activities:

1. Digitalization of fracture (and reflected non-fractured bone)
  - a. Procurement of CT-scan
  - b. Making 3D model of fractured bone
  - c. Advanced lessening of fracture
2. Modeling of patient-particular bone plate
  - a. Modeling techniques
  - b. Quality examination of patient-particular plates
  - c. Turned around building used to replicate the geometry of the business contrasting plates utilized as a part of the FE-contemplate.
3. Additive manufacturing
4. Post handling, cleaning and sanitization
5. Beginning assessment of the strategy



**Fig.3 Parts of the method used: CT-scan, 3D model of fracture, digital reduction of fracture, PS-plate design, strength analysis, AM manufactured and post-processed plate, test-fit in surgery**

### Additive Manufacturing

The principal think about in this proposal has the best spotlight on the genuine additive manufacturing process in which the EBM-technique is contrasted with traditional machining for the manufacturing of PS hip stems (paper I). The circumstances utilized for the document readiness, EBM manufacturing and diverse parts of the post-handling were taken, and the measure of squandered material in the EBM manufacturing was estimated. This part basically exhibits the utilization of AM for manufacturing the plates and pre-agent models for the situation contemplates on PS clavicle plating.

The five (counting the tibia-plate) contextual analyses on PS plates all finished with additively manufactured models or last items for the plates. By taking the investigations the distance to a model or finished result, critical outline points of interest that would have been missed with a more hypothetical approach were found. Down to earth execution was viewed as an

imperative piece of the work, as per the exchange in part about the conceivable outcomes and limitations of AM and, for this situation, the EBM technique. Cases of such points of interest are: by what method cans the coveted screw opening example (counting screw edges) be effectively manufactured with EBM and post-handling? Is it essential to model the plate radii effectively in the CAD model? Also, how to make the threading in the plate gaps keeping in mind the end goal to utilize a locking screw connection?

### INITIAL EVALUATION OF THE METHOD

1. **Test cases** the technique portrayed above was at first assessed by experimenting with the attack of the plates in four activity cases, exhibited in paper VI. These cases additionally conveyed essential contribution to the consistent advancement of the strategy. The trials were performed in collaboration with one orthopedic authority at the healing center of

Östersund. In the initial three cases the PS plates were test fitted amid normal activities and afterward supplanted by business plates.

- 2. Surgical arranging and association amongst specialist and engineer** to have the capacity to progress in this interdisciplinary territory involving both building and therapeutic capability, utilitarian strategies for collaboration are imperative. The orthopedic specialist, who is the restorative master and in charge of the activity needs to affirm the embed framework from the therapeutic perspective, without investing much time in the outline methodology. The specialist affirms it from the mechanical perspective.

## **POST-PROCESSING, CLEANING AND STERILIZATION**

The EBM manufacturing methodology of working up the parts layer-wise and melting the material encompassed by powder brings about a somewhat unpleasant surface with a Ra m. The unpleasant surface can be best for some value that is normally 10 - 50 embeds or parts of inserts for which improved bone in growth is attractive, as talked about in paper I. Now and again it doesn't make a difference whether the surface is smooth or unpleasant however for the fixation plates it is desirable over have a smooth surface that checks tissue grip, on the off chance that the plate must be expelled later on. Thus, post processing including pounding and cleaning of the plate surfaces and furthermore

finishing of the subtle elements for the screw gaps was done a while later.

## **RESULT FROM STUDY**

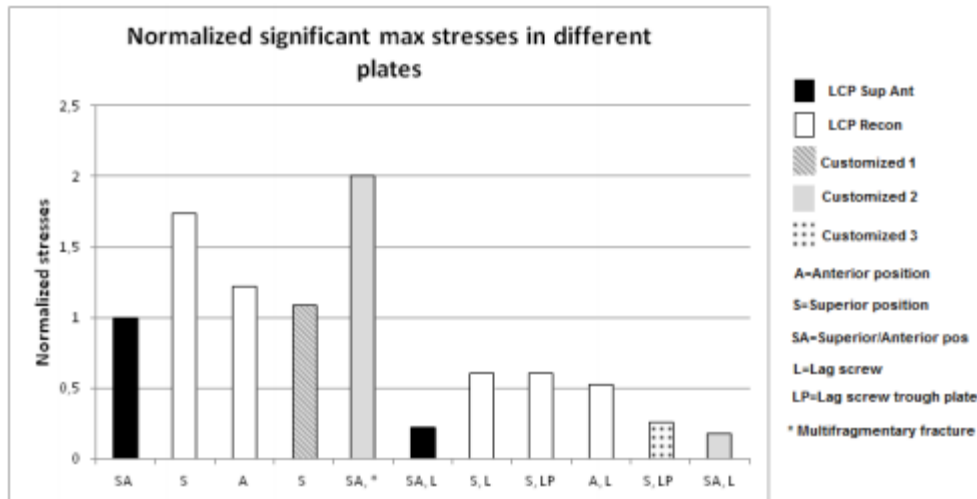
The outcomes from the underlying examinations demonstrate that EBM innovation has extraordinary potential, both for the manufacture of hip stems and for the maker of altered fixation plates. Paper I demonstrated the EBM innovation's plausibility for the maker of specially crafted hip stems (contrasted with customary machining). Under the suspicion that the surface for bone in-development on the center of the stem can be left in place or with small post processing the cost for the manufacturing could be fundamentally brought down by utilizing the EBM strategy. These funds are because of lessened material utilization and document planning time. In any case, the precondition of a surface structure adequate both for bone in-development and mechanical properties is additionally the fundamental issue that requirements fathoming, since the coarse surface structure demonstrates critical diminishment in the weariness quality. Then again, the coarse bone-in development zone is amidst the stem, where the stem is thick and thus isn't a heap delicate region. Advance the EBM procedure has developed since this investigation was performed and empowers a better surface structure and less porosity in the material. The mean Ra estimation of the test m which now it is normally in the vicinity of 10 and 50  $\mu$  bars in paper I, was indicate how quick the preconditions changes here and that new

conceivable outcomes are emerging for the innovation to be executed. In paper II a commitment was made to the improvement of a routine for the plan and manufacture of PS plates, which showed the potential outcomes for delivering these sorts of plates inside as far as possible connected with a specific kind of injury crack. Further, advancements were required in the technique for the modeling, post-handling, interdisciplinary participation schedules and mechanical properties control. In the second

piece of the postulation work, the PS plate modeling technique and strategies for quality simulations were the essential core interest.

### Finite Element simulations of clavicle plates

A technique for looking at stresses and displacements between various clavicle plates with enhanced itemizing in the stacking conditions contrasted with past distributed works was created and utilized.



**Fig.4 Summarized results from FE studies.**

The critical greatest worries in the LCP Sup-Ant and the altered 2 and 3 (modeled on a solitary crack and all utilizing slack screw fixation) were in a similar extent. Just a single altered plate was broke down on a solitary break without the utilization of a slack screw. That plate (Customized 1) additionally appeared to have a huge most extreme worry in an indistinguishable size from the looking at plates (without slack 52 screw fixation). The redid 1, was more

slender than the ordinary plates, yet was more cup-shaped around the bone

### DISCUSSION

Added substance manufacturing additionally called 3D-printing, is an essentially better approach for manufacturing parts layer-wise from 3D computer models. These strategies have quickly created in the course of recent years, from being a method for brisk item

perception to coordinate part manufacturing in numerous materials, including metals. Over a similar era there has been fast advancement in software for making medicinal/anatomical models and for the taking care of and utilization of such.

These new advancements have appeared to be valuable in therapeutic applications, normally for PS embeds and arranging. Further, the EBM strategy has been effective both in Europe (Adler Ortho and Lima Corporate) and in the USA (Exactech) for serial generation of acetabular cups work and as more specialist's become more acquainted with of the potential outcomes, better approaches to exploit the innovation will ceaselessly emerge. Working with this postulation has influenced me to acknowledge that it is so basic to have close participation between restorative experts and experts on the specialized side. Making PS gadgets includes an extraordinary association between the two callings. Every last item is interesting and planned by an architect and a specialist in some sort of collaboration. A contrasting option to the nearby collaboration is teach individuals with learning in the two zones.

## **FUTURE SCOPE**

The approach for enhancing the meaning of the limit conditions was to join the FE-model with multi-body musculoskeletal reproduction, going for sensible stacking case. A blend of these two can, with advancement, be utilized as a part of a more extensive perspective "to recreate distinctive

kinds of cracks, different phases of the recuperating procedure, diverse loads and places of the body, and mixes of the variables said above. Henceforth, it can be utilized to think about fixation techniques, reasonable body developments amid restoration, advancement of new plates.

As to quality simulations, critical future work is to perform multi-body musculoskeletal simulations in more important body positions to be utilized as a part of the FE-simulations for a superior comprehension of the stacking. The screw bone communications ought to likewise be modeled in better detail since screw haul out and slackening regularly is a more concerning issue than plate breakage. Further, the FE-model must be approved somehow towards experimental tests with a specific end goal to be utilized alone to affirm the quality of the PS plates components directly fabricated through electron beam melting technology", in Proceedings of the Materials & Processes for Medical Devices Conference, Boston, Massachusetts, USA, 15-20.

## **REFERENCES**

1. Kanatas AN, Needs C, Smith AB, Moran A, Jenkins G and Worrall SF (2012), "Short-term outcomes using the christensen patient-specific temporomandibular joint implant system: A prospective study", British Journal of Oral and Maxillofacial Surgery, 50: 149-153.

2. Osagie L, Figgie M and Bostrom M (2012), "Custom total hip arthroplasty in skeletal dysplasia", *International Orthopaedics*, 36: 527-531.
3. Singare S, Dichen L, Bingheng L, Yanpu L, Zhenyu G and Yaxiong L (2004), "Design and fabrication of custom mandible titanium tray based on rapid prototyping", *Medical Engineering and Physics*, 26: 671-676.
4. Stieglitz L, Gerber N, Schmid T, Mordasini P, Fichtner J, Fung C, Murek M, Weber S, Raabe A and Beck J (2014), "Intraoperative fabrication of patientspecific moulded implants for skull reconstruction: Single-centre experience of 28 cases", *Acta Neurochirurgica*, 156: 793-803.
5. Albano T, Grabowsky MB, Rodriguez L, Lavelle W, Uhl R, Ledet E and Sanders G (2011), "Designing patient-specific orthopaedic mesh implants to treat high-energy tibial fractures", in *Bioengineering Conference (NEBEC), 2011 IEEE 37th Annual Northeast*, 1-2.
6. Harrysson O, Deaton B and Bardin J (2006), "Evaluation of titanium implant bioengineering", *Theoretical Background, Examples and Software*, J Wiley and Sons, Chichester,
9. Duprey S, Bruyere K and Verriest J-P (2008), "Influence of geometrical personalization on the simulation of clavicle fractures", *Journal of Biomechanics*, 41: 200-207.
10. Golish SR, Oliviero J, Francke E and Miller M (2008), "A biomechanical study of plate versus intramedullary devices for midshaft clavicle fixation", *Journal of Orthopaedic Surgery and Research*, 3: 28-32.
7. Cronskär M, "The use of additive manufacturing in the custom design of orthopedic implants", *Department of Engineering and Sustainable Development*, 2011.
8. Kojic M, Filipovic N, Stojanovic B and Kojic N (2008), "Computer modeling in